

目录

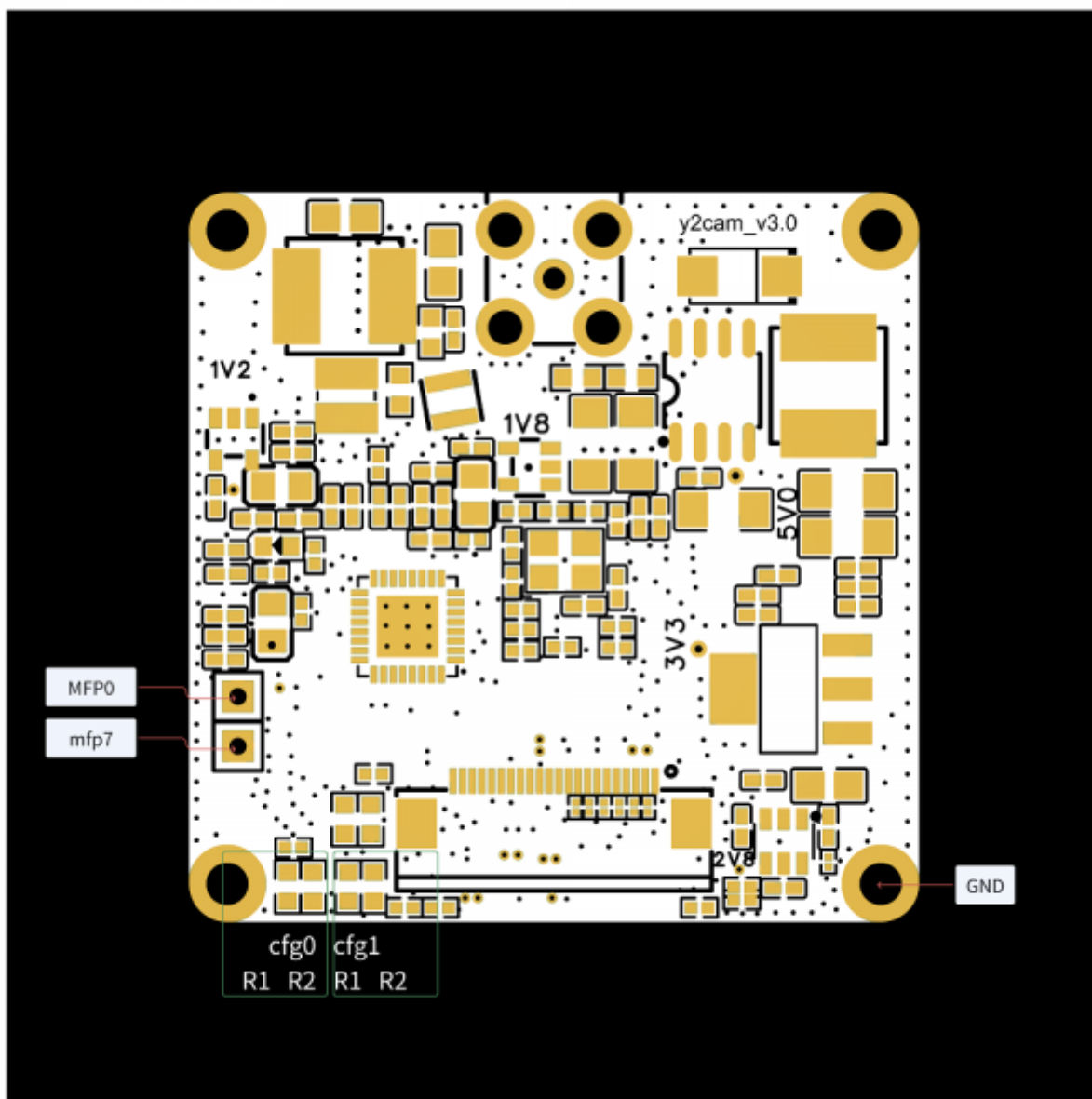
- v3_0版22pin树莓派zero接口** 3
- 主要特点：** 3
- 硬件配置** 3
- FPC接口** 3
- 使用说明** 4

v3_0版22pin树莓派zero接口

主要特点：

- 22pin标准树莓派ZERO接口
- IO口电压3.3V
- 引出串化器主要GPIO
- 引出5V电压

硬件配置



FPC接口

Pin #	Name	Description
1	GND	Ground
2	CAM_D0_N	MPI Data Lane 0 Negative
3	CAM_D0_P	MPI Data Lane 0 Positive
4	GND	Ground
5	CAM_D1_N	MPI Data Lane 1 Negative
6	CAM_D1_P	MPI Data Lane 1 Positive
7	GND	Ground
8	CAM_CLK_N	MPI Clock Lane Negative
9	CAM_CLK_P	MPI Clock Lane Positive
10	GND	Ground
11	CAM_D2_N	MPI Data Lane 2 Negative
12	CAM_D2_P	MPI Data Lane 2 Positive
13	GND	Ground
14	CAM_D3_N	MPI Data Lane 3 Negative
15	CAM_D3_P	MPI Data Lane 3 Positive
16	GND	Ground
17	CAM_IO0	Power Enable
18	CAM_IO1	LED Indicator
19	GND	Ground
20	SCL	I2C SCL
21	SDA	SDA serial Interface data IO
22	VCC	3.3V Power Supply

使用说明

1. IO接口电压3.3V
2. mipi接口默认22PIN标准raspberry pi zero接口
3. VDDIO为3v3(串化器所有数字接口FPC的GPIO/I2C接口相同电平)
4. 默认地址0x80, 默认模式GMSL2/6Gbps.

From: <https://wiki.yytech.cc/> - YTT Docs
Permanent link: https://wiki.yytech.cc/doku.php?id=%E6%89%A9%E5%B1%95%E5%8D%A1:max9295%E4%B8%B2%E5%8C%96%E6%9D%BF_%E6%A0%91%E8%8E%93%E6%B4%BE%E6%8E%A5%E5%8F%A3:v3_0%E7%89%822pin%E6%A0%91%E8%8E%93%E6%B4%BEzero%E6%8E%A5%E5%8F%A3
Last update: 2023/12/21 22:30

